

## Faculty

---

MILES FRANK REED, M. A.

PRINCIPAL

B. S., University of Idaho, 1901; M. A., Columbia University, 1907; Professor of Physics and Chemistry, Lewiston State Normal, 1901-2; Principal Preparatory School and Instructor in Education, University of Idaho, 1902-6; Teachers College Scholar, Columbia University, 1906-7; Principal Academy of Idaho, 1907.



HERBERT DENISON CHENEY,  
A. M.

ANCIENT AND MODERN LANGUAGES

A. B., Wesleyan University, 1895, Delaware, Ohio; A. M., Harvard University, 1899; Instructor in Ancient and Modern Languages, Grand Prairie Seminary, 1895-1898, Onarga, Ill.; Graduate Work, University of Chicago, 1899-1900; Vice-Principal High School, 1900-1901, Menomonie, Wis.; Instructor in Ancient and Modern Languages, Western Military Academy, 1901-1902, Upper Alton, Ill.; Instructor in Ancient and Modern Languages in the Academy of Idaho, 1902.

JAY WILLIAM SLAUGHTER  
DIRECTOR DEPARTMENT AGRICULTURE

Graduate Western Michigan College, 1893, Grand Rapids, Mich.; Graduate Ferris Institute, 1897, Big Rapids, Mich.; Special student in the Michigan Agricultural College, summer of 1909; Superintendent of Schools, 1898-99, Grand Ledge, Mich.; Superintendent of Schools, 1899-1902, Pontwater, Mich.; Principal Department of Mathematics, 1902-1904, Lansing High School, Lansing, Mich.; Instructor in Mathematics and Science in the Academy of Idaho, 1904; Instructor in Science in the Academy of Idaho, 1905; Director Department of Agriculture, 1909; Graduate School of Agriculture, Iowa State College, 1910.



## JESSE EDWARD RETHERFORD, A. B.

### HISTORY AND CIVICS

Graduate Indiana State Normal School, 1895, Terre Haute, Indiana; A. B., Indiana University, 1901; Superintendent of Schools, Carmel, Indiana, 1899-1902; Graduate Student in the University of Chicago, 1902-1903; Instructor in History, Ogden High School, Ogden, Utah, 1903-1905; Instructor in History and Political Science in the Academy of Idaho, 1905.



## S. AUGUSTA TAINTOR, M. A.

### DEAN OF WOMEN AND ENGLISH

A. B., Elmira College, 1898; A. M., Columbia University, 1906; Graduate Student, University of Chicago, 1906-8; Preceptress and Instructor in English, Avon High School, Avon, N. Y., 1899-1905; Head of the Department of English, Franklin Academy, Malone, N. Y., 1903-1905; Instructor in English, Thornton Township High School, Harvey, Ill., 1907-1908; Instructor in English, and Dean of Young Women in the Academy of Idaho, 1908-9; Summer Session of Oxford University, England, 1911.

## A. A. ERBLANG, A. M.

## COMMERCE

A. M., Jasper College, Jasper, Indiana, 1893; Special Student in St. Francis College, Quincy, Ill., 1898-99; Instructor in Brown's Business College, Fairbault, Minn., 1902-1904; Instructor in National Business College, Quincy, Ill., 1905-1906; Instructor in Commerce, Quincy High School, 1906-1908; Instructor in Commerce, Academy of Idaho, 1909.

HARVEY ROBSON HOLMES,  
Ph. B.MATHEMATICS AND DIRECTOR OF  
PHYSICAL CULTURE

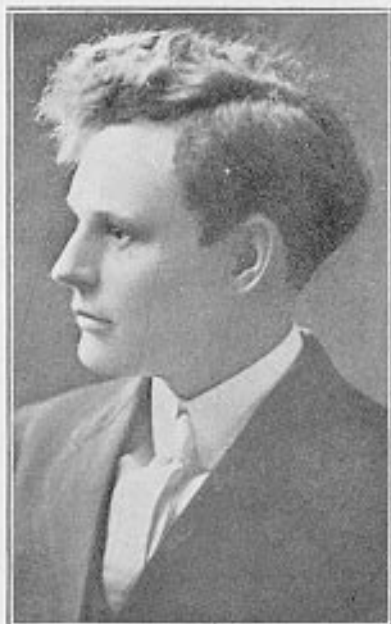
Graduate Advanced Course, Winona, Minnesota, Normal, 1897; Ph. B., Wisconsin University, 1900; Assistant Professor of Physical Education and Instructor in Mathematics, State University of Utah, 1900-1904; Professor of Physical Education and Instructor in Mathematics, University of Southern California, 1904-1908; Instructor University of Utah, Summer Session, 1901-2-3; Instructor Wisconsin University, Summer Session, 1904; Instructor University of Southern California, Summer Session, 1905-6-7.



## A. C. GOUGH, B. M. E.

DIRECTOR DEPARTMENT OF  
INDUSTRIAL ARTS

B. M. E., Kentucky State University, 1906; with H. F. Gough & Sons Carriage & Machine Works, 1893-1900, and 1902-04; with Fairbanks-Morse Mfg. Co., summer of 1906 and 1907; Instructor Mechanical Engineering, Iowa State College, 1906-07; Instructor Mechanical Engineering, Nevada University, 1907-10; Instructor Mechanic and Industrial Arts, Academy of Idaho, 1910.



## NORMAN B. ADKISON, B. S.

## SCIENCE

B. S., University of Idaho, 1907; Graduate Student Columbia University, Summer Session, 1910; Graduate National Institute of Pharmacy, 1911; Instructor in Chemistry, University of Idaho, 1905-7; Superintendent of Schools, Denver, Idaho, 1907-8; Instructor in Science and German, Grangeville (Idaho) High School, 1908-9; Principal High School, Grangeville, Idaho, 1909-10; Instructor in Science, Academy of Idaho, 1910.



## THEODORE COURTNEY

## INSTRUCTOR IN COMMERCE

Graduate Ferris Institute, Big Rapids, Mich., 1894; Principal Commercial Department, Flint Normal School, 1894-95; Instructor in Commerce, Bliss Business College, 1895-96; Instructor in Commerce, B. & S. Business College, Providence, R. I., 1896-1902; Principal Commercial Department, Iowa Business College, Des Moines, Iowa, 1902-03; Instructor Commerce, Albany, N. Y., Business College, 1904-05; Instructor in Commerce, National Business College, Quincy, Ill., 1905-06; Principal Commercial Department Strayer's Business College, Washington, D. C., 1906-07; Principal Commercial Department Henager's Business College, Salt Lake City, 1908-11; Instructor in Commerce, Academy of Idaho, 1911.



## JULIA L. WHEATON

## INSTRUCTOR IN DOMESTIC SCIENCE

Graduate Keystone Academy, Factoryville, Pa., 1903; Graduate Pratt Institute, 1910; Instructor in Public Schools, Susquehanna County, Pa., 1903-07; Dietitian in City Hospital, Wilkes-Barre, Pa., 1910; Instructor in Domestic Science, Academy of Idaho, 1911.



## STELLA B. STEARNS, M. A.

## INSTRUCTOR IN ENGLISH

A. B., University of Minnesota, 1895; Bryn Mawr, 1892-93; Leland Stanford, 1898; Chicago University, 1902-04; M. A., Columbia University, 1905-07; Instructor in Latin and English, High School, Elsinore, Calif., 1898-99; Instructor in Latin and English in High School, Compton, Calif., 1899-02; Instructor in English, Duluth High School, Duluth, Minn., 1904-05; Instructor in English and Psychology, Miss Graham's School, New York City, 1907-08; Instructor in English and Psychology and Regent in National Park Seminary, Washington, D. C., 1908-11; Instructor in English, Academy of Idaho, 1911.



## ELIZABETH M. BARNES

## EXPRESSION AND PUBLIC SPEAKING

Graduate Emerson College of Oratory, 1898; Graduate Work, Columbia University, 1902; Post Graduate Work, Emerson College of Oratory, 1909-10; Studio Teaching, Hartford, Conn., 1900-02; English and Expression, Rockwell High School, 1902-08; Head of the Department of Expression and Public Speaking, Mount Carroll College, 1910-11; Instructor Expression and Public Speaking, Academy of Idaho, 1911.



## RICHARD WARWAS

## INSTRUCTOR IN INDUSTRIAL ARTS

Graduate Gymnasium, Berlin, Germany, 1892; Student Kunst Gewerbe Schule (Industrial Arts School), Berlin, 1895 and 1896; Decorative Designer, 1897-1907, Student Chicago Art Institute, 1907-08; Graduate Armour Institute of Technology, 1911; Instructor Industrial Arts, Academy of Idaho, 1911.



## HAZEL K. STODDARD

## DOMESTIC ARTS

Graduate Lewis Institute, Associate in Domestic Economy, 1911; Post-graduate in Domestic Art Lewis Institute, and Instructor in Cooking and Sewing, Lewis Institute Night School, 1911-12; Academy of Idaho, 1912-13.





## J. WYLEY SESSIONS, B. S. Agr.

Graduate Utah Agricultural College, 1911; Instructor in Agriculture, Manti High School, Manti, Utah, 1911-12; Instructor in Agriculture, Academy of Idaho, 1912.



## ARTHUR WATKINS

(Fellow of Tonic Sol-Fa College, London)  
 Student at Maryland School of Music, 1898; New England Conservatory of Music, 1900-1901; Tonic Sol-Fa College, 1902-1903; Vocal Instructor Wesleyan College, W. Va., 1904-1905; Penna. Industrial Schools, 1905-1906; Graduate in Music, London, 1907; Agricultural College, N. M., 1907-1909; University of Wyoming, 1909-1910; Elected to Fellowship while abroad, 1910-1912; Academy of Idaho, 1912.

## J. HARRY AKER

CONCERT PIANIST AND INSTRUCTOR OF  
PIANO

Student of Royal Conservatory of Music, Leipzig, Germany; Concert Preparation with Alfred Reisenauer, Telemague Lambrino, and Joseph Pembaur; Theory with Gustave Schreck; Repertoire with Leopold Godowsky, Ber'in, Germany; Private Instructor in Harrisburg, Pa., 1892-1911; Director of Music, Henderson-Brown College, 1911-12.



## J. A. FOGT M. A.

SHORTHAND AND TYPEWRITING

Charles City College, 1909; M. A., 1910; Special Student in Stenography, Assistant in Commercial Department, Charles City College School of Commerce, 1909; Institute Training School, Chicago, Summer Session, 1910; Teachers' Certificate, Gregg; Superintendent of Commerce, Athletics, Charles City College, 1909-11; Principal of Commercial Department, Athletics, Sedgwick County High School, Julesburg, Colo., 1911-12; Shorthand Department, Academy of Idaho, 1912.



## GRETCHEN SMITH

## LIBRARIAN

Student two years University of Colorado; Student one term Colorado State Agricultural College; attendant of Los Angeles Public Library Training Class; Student one year Lake Forest College; Assistant Librarian, Agricultural College Library, Fort Collins, Colorado, 1903; Assistant Librarian, Public Library, Greeley, Colorado, 1903-1905; Member Los Angeles Public Library Staff, 1906-1908; Assistant Librarian, Lake Forest College Library, 1908-1909; Librarian, Academy of Idaho, 1909; Absent on leave; Student in Barnard College, Columbia University.



## MABEL CORY

## ACTING LIBRARIAN

Student University of Wisconsin, 1901; Stanford University, 1902; Graduate Los Angeles Public Library Training School, 1905; On Staff of Los Angeles Public Library, 1905-1912; Acting Librarian Academy of Idaho, 1912-1913.

## MAUDE E. DAYTON

## SECRETARY TO PRESIDENT

Academy of Idaho, 1908; Secretary of Alumni  
Association; Secretary to the President, 1909-1913.

---



Officers and Employees



**GEORGE PERRY**  
Farm Manager



**MRS. ELIZABETH ROOKER**  
Matron of the Dining Hall



**JOSEPH B. HAWKLEY**  
Janitor