

Announcement

We are very pleased to announce that the General Binding Corporation, the world's largest producers of mechanical bindings, have appointed us as a CERLOX Licensee in Idaho.

Cerlox bindings are made of plastic material, come in various colors, and are obtainable in a complete range of sizes. They are non-inflammable, durable, smooth in surface (thus preventing paper wear), and are suitable for either two-piece or wrap-around covers of any material.

CERLOX bindings may run full length of book, or by using Dual and Threeplex sets of rings, space is allowed for imprinting on backbone of cover, which is very often desired.

We will be pleased to furnish upon request, samples, dummies, costs, etc., of this new and attractive binding.

Gateway Printers, Inc.

Box 1093—Phone 121

418 West Center

Pocatello, Idaho



Startin' a library, Bub?

Nope, just a LITTLE homework for Dr. Weir!



Naval organization courses are a vital part of military training. These courses give the trainee a fuller knowledge of the Navy and its branches.



The training library in Graveley Hall is kept up to date by Lt. Dawe, and it holds a great deal of information concerning the Navy.



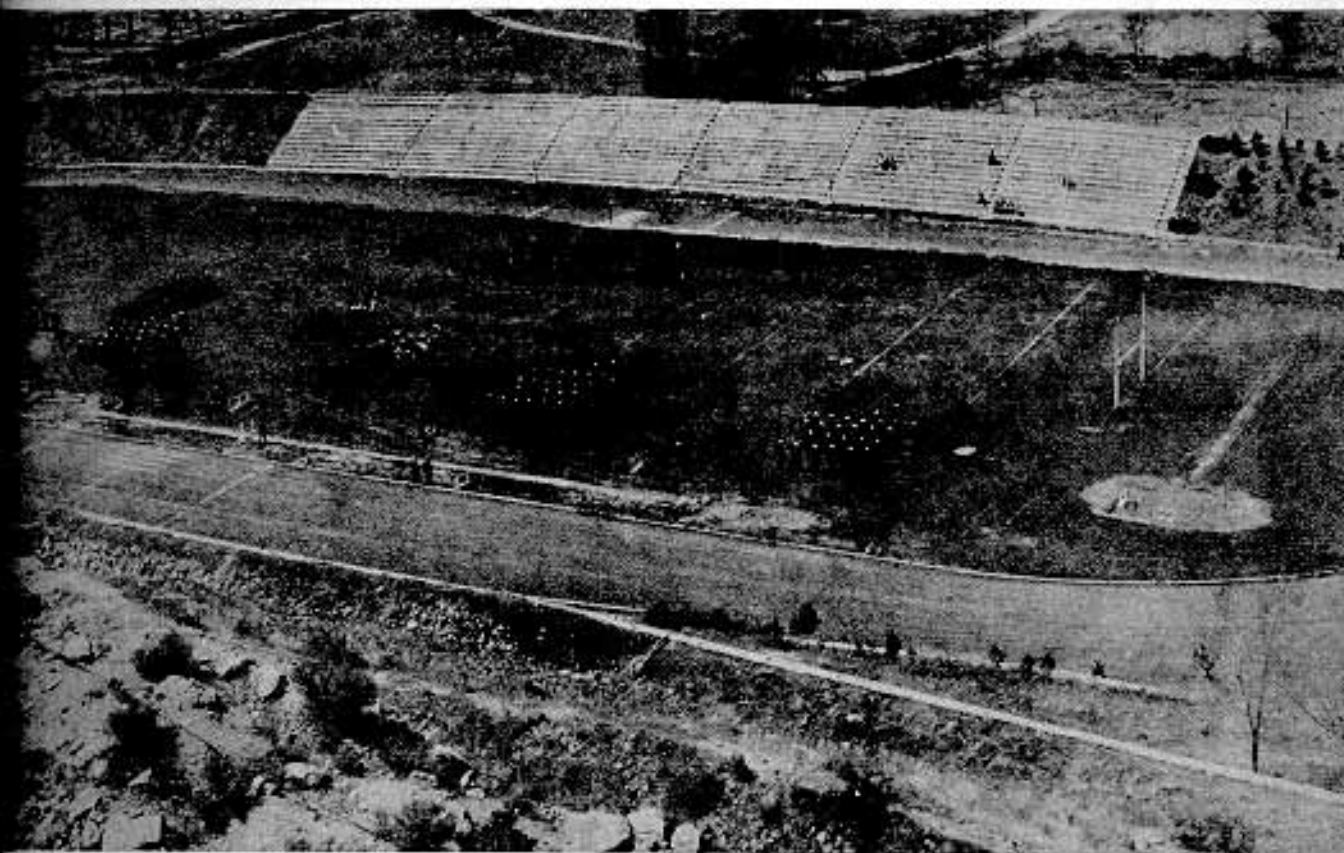
The value of a strenuous P. E. program has been proven by the Navy. Strength tests measure the individual's physical fitness once every two months.



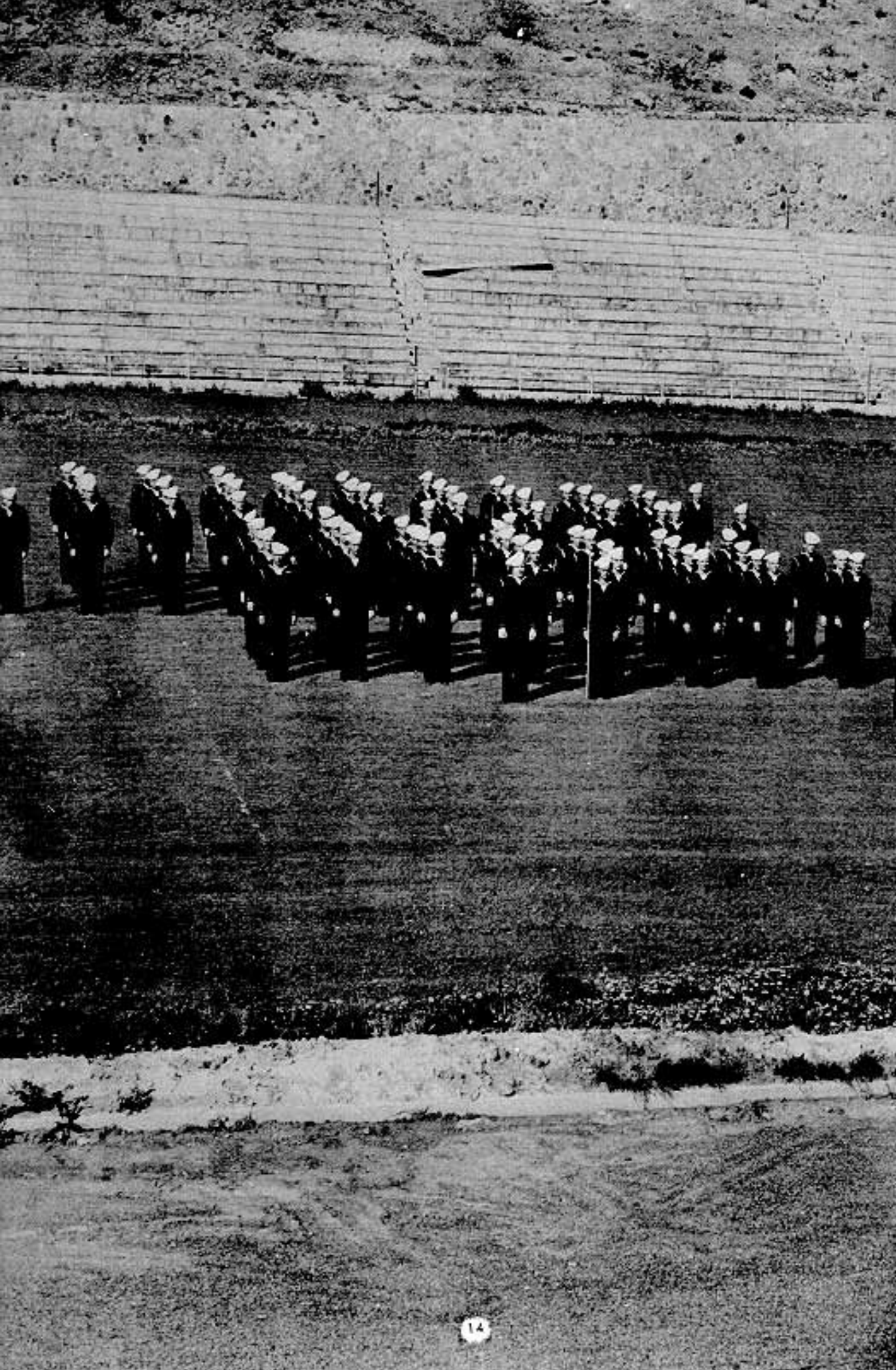
Accelerated schooling, strenuous physical education, and precise military life is a worthy result. It brings to each trainee the realization of his hopes for the future, of becoming an officer in the United States Navy.



The staff officers of this unit include: (left to right) Lt. Dawe, executive officer; Lt. Tawter, dental officer; Lt. Brubaker, commanding officer; Lt. (jg) Hammond, supply officer; Lt. Comdr. Kenny, medical officer.



An inspection and review, which is universal in military life, and in which every trainee participates, is held weekly at this unit. Dress inspections are by far the most colorful part of military life and they instill in the participants a deep pride for their branch of service.





GRAVELEY HALL

Besides the commissioned officers, an organized group of student officers is charged with the administration of the V-12 unit. This designated group is directly responsible to the officers and chiefs for the conduct of the trainees.

The military organization is under the direction of the battalion commander and includes the company commanders and platoon leaders. These men are in

The staff student officers, headed by the wing captain, and including the deck mates, are responsible for accountability reports, and for the general cleanliness of the ship.

This type of setup teaches men to give orders, follow orders, and is considered a very important part in the training of our future



Pays to Shop at . . .

The People's Store . . .

Where quality tells in everything
we sell"

. . . and where you are certain of
finding what you want at prices
you can afford to pay.

IDAHO STATE COLLEGE LIBRARY

312 West Center

Phone 1000

COOK DRUG CO.

We are Leaders in Our Line

Prescriptions
OUR SPECIALTY

Phone 17
333 West Center

Pocatello

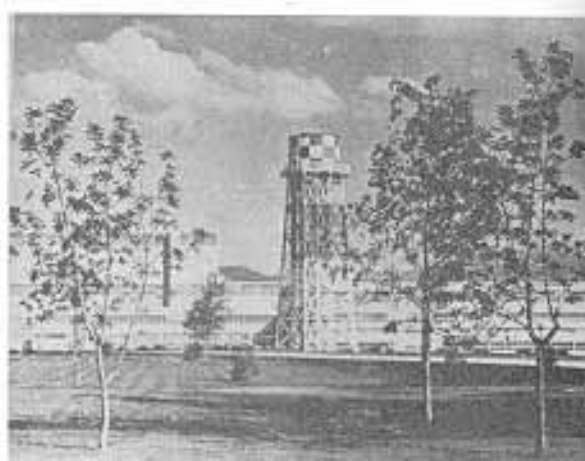
Idaho



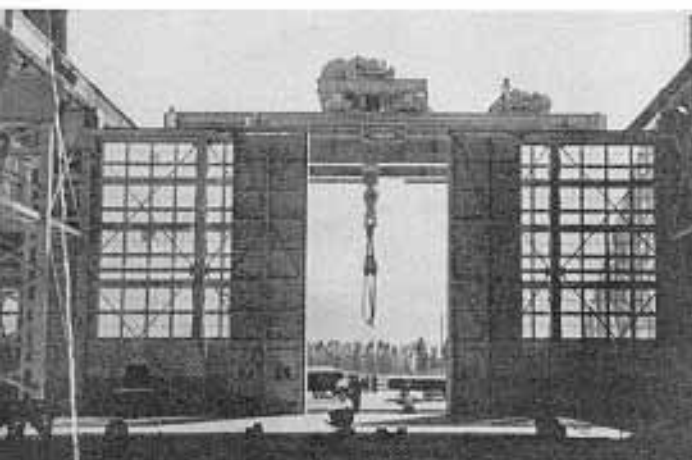
I had to run my dang legs o
Chief, but I made'er in 12 mi



Captain Brown, Commanding Officer of the Naval Ordnance Plant and of the Arco Proving Grounds.



"My \$50 war bond helped pay for this."



This giant crane is used to haul rifles onto railroad cars.

The Naval Gun Plant and Arco Trip

Part of the military education of the V-12's at the University was a trip to the Naval Ordnance Plant and to the Arco Naval Proving Grounds.



This is the American war worker—his foe is the Japanese war worker.



These Naval rifles will be bombarding not too far in the future.



This was our transportation—a gyrene is chauffeur!



The electric crane places the rifles in its mount.
The rifle is loaded.

The Navy is indebted to Captain Brown of Ordnance Plant for making the tour possible. The pictures, made by Pat Hutton, were prepared and released by Captain Brown. The pictures were taken from the fire control and from the central platform.



The rifle is loaded.



Crane carries the rifle from railroad car to an electric train.



Fire! (Note shell above the smoke.)